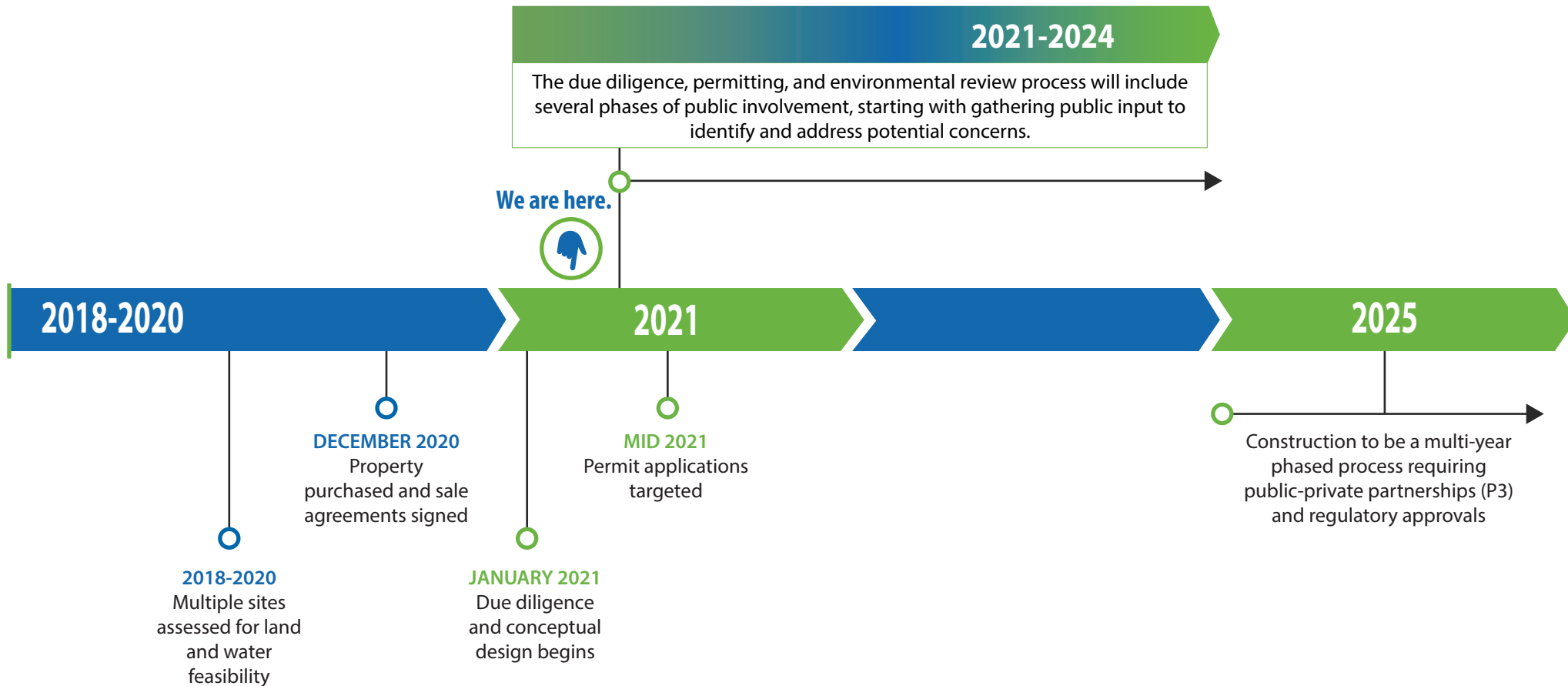


PROPOSED DEVELOPMENT TIMELINE



Updated March 30, 2021



PROPOSED

LOUISIANA INTERNATIONAL TERMINAL ST. BERNARD

What We Know

- Port NOLA, Louisiana's only international container port, has seen container volumes double over the past decade. A second terminal is needed to meet continued demand and serve larger vessels, capturing new opportunity for the Parish and region.
- The Violet site is the most advantageous on the Lower Mississippi River — with naturally deep draft, access to existing rail and road infrastructure, and location within the federal flood protection system.
- The terminal is expected to initially generate an estimated 600 industry-related jobs for St. Bernard, projected to increase to more than 2,000 within 5 years of operation.
- Local, state, federal, and private partnerships will ensure a coordinated project that supports terminal operations and addresses community needs.

To Be Determined

- Specific layout or size of the facility
- Potential traffic, noise, or other effects
- Specific mitigation strategies for nearby communities

PORT NOLA PUBLIC PROCESS

Port NOLA is committed to building knowledge and understanding through:

- Transparency throughout project
- Respectful community engagement
- Ongoing opportunities to learn and contribute



Stay up to date at
yourworkingriver.com